

Logo Icons



Theatre Mask

The classic comedy/tragedy mask is a universal emblem of the performing arts, particularly acting and stagecraft. It embodies storytelling, emotional expression, and character portrayal.



Music Note

The musical note symbolizes vocal and instrumental education. It conveys rhythm, melody, harmony, and the structured creativity of musical composition and performance.



Dancing Human Figure

The stylized figure in motion represents physical expression, grace, and movement. It conveys energy, rhythm, and the artistic language of the body in space.

Colour Symbolism



Dark Blue

represents trust, wisdom, and stability, aligning with structured learning and professionalism in the arts.



Orange
(Theatre and drama)

conveys creativity, energy, and emotional expression—key elements in theatre.



Red
(Musical Note)

symbolizes passion, rhythm, and vibrancy, resonating with the emotional power of music.

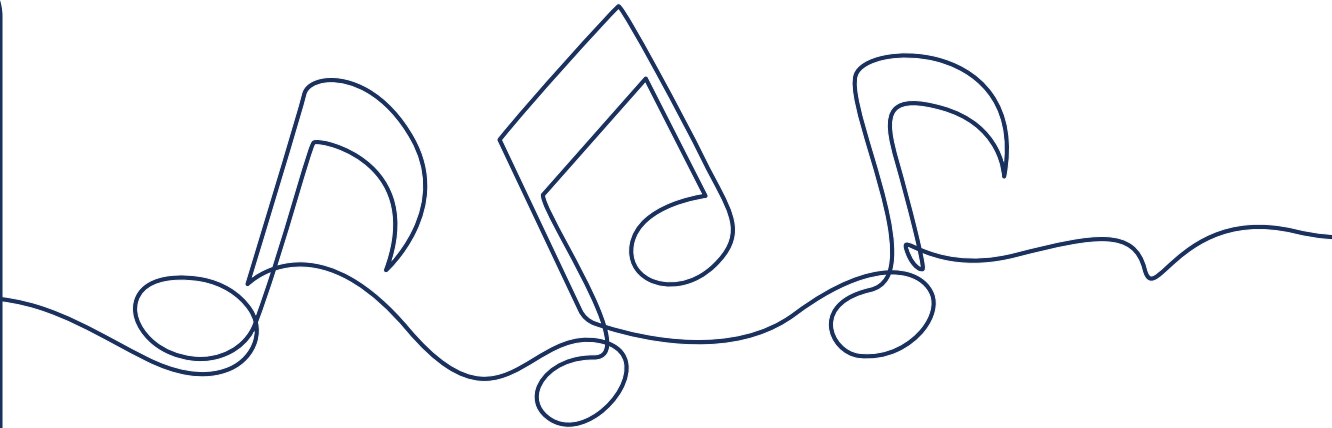


Light Blue
(Dance)

suggests fluidity, freedom, and harmony, reflecting the expressive nature of dance

Brand Story

At Ramagya Arts Academy, we believe that true expression isn't taught - it's uncovered. Every child carries within them a spark: a rhythm, a voice, a story waiting to be told. Our role is not to impose, but to invite and to guide students as they discover what already lives inside them.



Through the worlds of theatre, music, and dance, we offer more than technique. We offer space: space to explore, to feel, to transform. Each class is a conversation with the self; each performance, a celebration of authenticity.

Here, a whispered line becomes a roar of confidence. A single step becomes a flight of freedom. A note played becomes a memory etched into time. We don't just nurture artists - we reveal them.

Because at Ramagya Arts Academy, we don't shape expression. We awaken it.

And in doing so, we help children not only find their art but find themselves.

This is where the inner voice becomes a performance.
This is Ramagya Arts Academy.

